



Janeen Allwright

&

Simon Warr

WE WORK WITH:

**13-25 YEAR OLDS WHO ARE
OUTSIDE EDUCATION, TRAINING
OR EMPLOYMENT, OR WHO ARE
AT RISK OF DROPPING OUT**

What we do:

A long term personal development programme which focuses on the individual young person to develop their confidence, motivation and skills to meet the responsibilities and opportunities of today's society

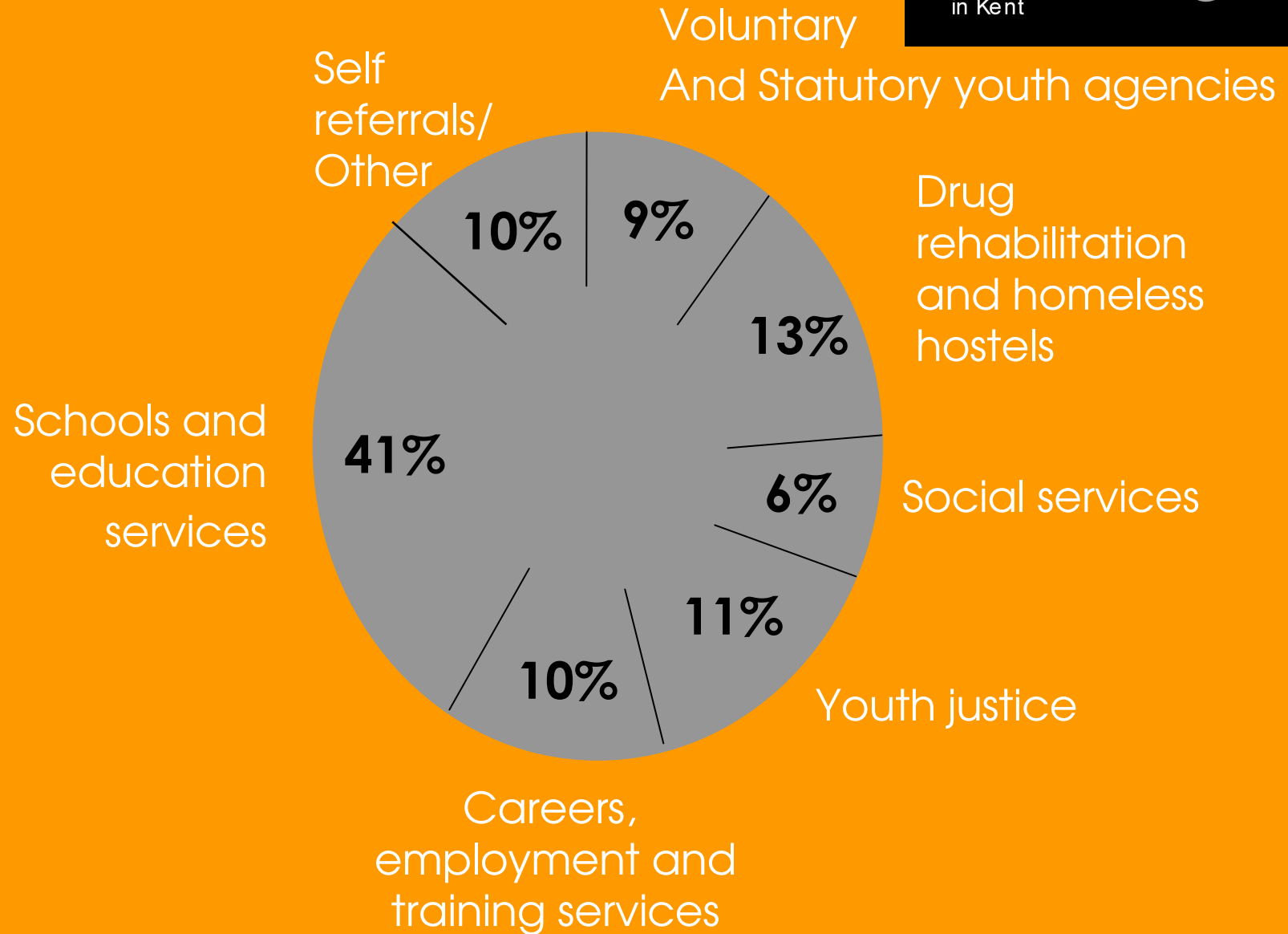


fairbridge
in Kent





Referrals



How we impact on Swale & Kent County Council Targets:



- ↑ Young people from low income progressing to higher education
- ↑ Effectiveness of CAMHS
- ↑ Emotional health of children
- ↓ Under 18 conception rate
- ↓ Substance misuse by yps
- ↑ Young offenders access to suitable accommodation
- ↑ Emotional & behavioural health of children in care
- ↑ Care leavers in employment, education or training
- ↑ Young people's participation in positive activities
- ↓ 1st time entrants to YOS aged 10 – 17
- ↑ Young offenders engaged in suitable education, employment or training
- ↓ 16 – 18 yr olds not in education or employment
- ↓ Secondary school persistent absence rate
- ↓ Dealing with concerns about anti-social behaviour
- ↓ Children involved in RTAs
- ↓ Children who have experienced bullying

Some interesting statistics:



- 2006 / 07 referrals from Swale: 14 young people
- 2007 / 08 referrals from Swale: 11 young people

- Hard outcomes: 3 employed
4 retained in education

- Cost: 25 x £ 3,000 = **£ 75,000**

- Funded: by KCC 2 x £ 11,000 = **£22,000 for the whole of Kent!**

Any Questions?

fairbridge
in Kent

